

Roanoke Gets New Community Healthcare Building

New Horizons Healthcare opened its new \$10.7-million community healthcare building, located on Melrose Avenue in Roanoke, VA.

The new facility features 21 medical examination rooms, an on-site pharmacy, dental clinic, x-ray room, and space for future expansion in mental health, pediatrics and family medicine.

Richmond-based architect Baskervill, with whom Shockey has successfully completed several other healthcare projects, served as the design-build partner on the project. ★

“...a community anchor...”
— Eileen Lepro,
Executive Director, New Horizons Healthcare

NEW HORIZONS HEALTHCARE
Roanoke, VA
Architect: Baskervill
Size: 32,000 SF

Howard Shockey & Sons, Inc. Awarded ‘Excellent’ Contractor Rating

RALEIGH, N.C. — Howard Shockey & Sons, Inc. has received the highest rating available — “Excellent”— from The Contractor Score.

CONTRACTOR SCORE



WHAT DOES THE SCORE MEAN?

Contractor Score ranks contractors based on empirical, verified information. It independently analyzes a contractor's financial statements, lines of credit, backlog, and work in progress, along with its management capacity. The resulting score sheet is a tool that developers and owners can use to better assess contractor qualifications.

The score provides transparency during the qualification process, to help worthy contractors stand out. ★

©Peter Aaslestad

High Tech Academic Center Unveiled at Highland School

Highland School, a co-ed, independent day school located in Warrenton, VA, formally opened its new Johnson Academic Center, the heart of a \$2.4-million Middle School renovation, in September.

Howard Shockey & Sons, Inc. served as general contractor on the project.

“We’ve got a space that transforms what we do for kids,” Middle School Director Matt Ormiston said. “This shows that we really value these years. It’s a game-changer for our faculty to do something new and innovative.”

Headmaster Hank Berg said he and Mr. Ormiston traveled the state, looking for similar middle school learning centers, but found none. Middle school is special, Mr. Berg, a former middle school administrator, said before the ribbon cutting. “I’ve been waiting since the mid-1980s to see somebody do something special with middle school.”

A bright, new library with lots of technology lies at the heart of the center.

“This makes a statement that academics is the core of what we do. The learning center encourages collaboration and transparency,” Berg added. He predicted that lots of educators from other schools will visit Highland to learn about the new center. ✨



“We’ve got a space that transforms what we do for kids.”

— Matt Ormiston,
Middle School Director, Highland School

HIGHLAND SCHOOL MIDDLE SCHOOL JOHNSON ACADEMIC CENTER

Warrenton, VA
Architect: DCS Design
Size: 21,420 SF

A crowd gathers outside the library at a September open house for Highland School’s Johnson Academic Center. The space, flooded by skylights and huge windows, was built by Shockey. The library, at the heart of the center, features lime-green fixtures and accents with natural light. The academic center also has a computer lab with 17 large, touch-screen monitors and a media room, equipped for videoconferencing.

Source: FauquierNow.com

New Hires

Shockey Expands Business Development Team

Doug Hilemn, a 28-year veteran of the construction industry in Richmond, has joined Howard Shockey & Sons, Inc. as Project Director. Hilemn will spearhead the firm’s business development and provide executive-level project oversight in the central Virginia region.

In the past few years, Shockey has established its presence in Richmond and the surrounding market with high-visibility projects such as GRTC’s award-winning operations facility (selected the nation’s best industrial project in 2010 by The McGraw-Hill Companies, Inc.), the expansion of Riverside Regional Jail, and the ongoing construction of Martin Luther King, Jr. Middle School.

Hilemn resides in Richmond. Experienced in all areas of construction, from project start-up and development to estimating, project management, operations and job-site safety, Hilemn holds a B.S. in Civil Engineering from West Virginia University.

Hilemn’s three decades of experience with companies such as DPR, Emerald, and McDevitt & Street features a broad range of commercial, multi-family, and healthcare projects in the Richmond and Charlottesville

areas, ranging from Two James Center to HCA Healthcare.

Also joining Howard Shockey & Sons is another graduate of West Virginia University.

Andrea Rogers holds a B.S. in Business Administration/Marketing, and will receive her M.A. in Integrated Marketing Communication in May 2013.

Rogers joins Shockey as Marketing Research Representative to study geographic and product sectors to determine viability and market opportunities. She will also represent the company at trade shows and industry events, as well as develop, coordinate and deliver a Lunchbox Education Program for the design community. ✨



Recent NEWS

Business Trends: Commercial Real Estate | Virginia Business

Analysts and industry executives still believe construction spending will increase, but growth will be slower and more gradual than originally anticipated.

Interest in public/private partnerships has grown because companies have easier access to capital than public agencies. “It’s a great way for a public entity to work with a private entity,” says Jeff Boehm, vice president at Howard Shockey & Sons, Inc. “We are working on our eleventh project. It’s a great delivery method.”

Read more at: howardshockey.com

Source: Virginia Business magazine, October 2012

Shockey Approved as Construction Manager for Two High Schools in West Virginia | The Moorefield Examiner

MOOREFIELD, W. Va. - Howard Shockey & Sons, Inc. will serve as construction manager for the Moorefield High School and East Hardy High School building projects.

Read more at: howardshockey.com

Source: The Moorefield Examiner

Cell Blocks Delivered to RSW Jail Site | Northern Virginia Daily



FRONT ROYAL - With clearing and grading work wrapping up at the site of the RSW Regional Jail on U.S. 340/522, 70-square-foot cells are being delivered in blocks of 24 for construction of the 270,000-square-foot jail slated to open in 2014. Some of the cell blocks are 40-some thousand pounds a piece.

Read more at: howardshockey.com

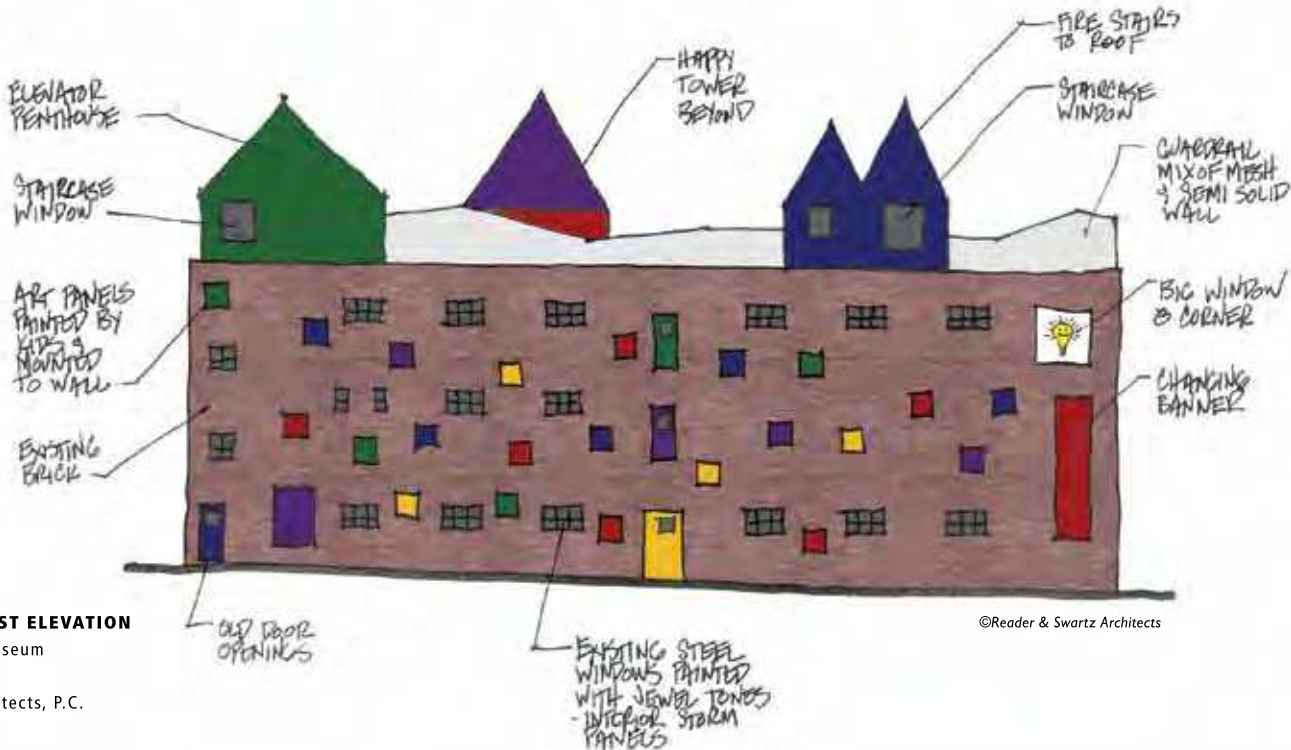
Sources: Page News and Courier; The Shenandoah Valley-Herald; The Warren Sentinel

Shockey To Build Children’s Museum

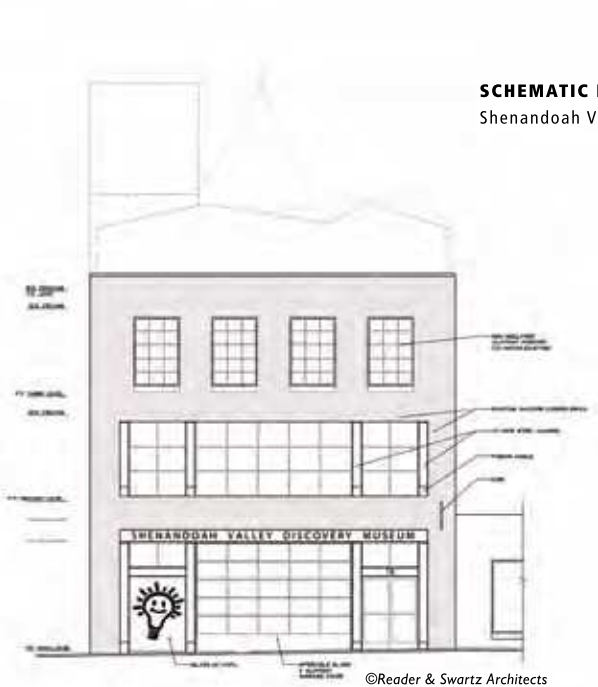
Howard Shockey & Sons, Inc. and Reader & Swartz Architects are leading the rehabilitation effort for the Shenandoah Valley Discovery Museum’s new building in Winchester, one of only seven children’s museums in Virginia. ✨

CONCEPTUAL CARTOON – EAST ELEVATION

Shenandoah Valley Discovery Museum
Winchester, VA
Architect: Reader & Swartz Architects, P.C.
Size: 14,500 SF



©Reader & Swartz Architects



©Reader & Swartz Architects

The planned renovations for the the Shenandoah Valley Discovery Museum include enlivening the exterior with a community art project executed by children, an operable glass garage door and storefront windows, and a whimsical, exuberant roof deck with landscaped learning gardens. Inside, the museum will offer a 30-foot kinetic sculpture, exhibit space with an actual-size triceratops and a real ambulance, as well as classrooms, offices and a gift shop.

Sources: Winchester Star, Reader & Swartz Architects, P.C.

SHOCKEY
THE PARTNER OF CHOICE®

Howard Shockey & Sons, Inc.
P.O. Box 2530
Winchester, VA 22604

540.667.7700

PRESORTED
STANDARD
U.S. POSTAGE PAID
WINCHESTER, VA
PERMIT NO 213

[ARE WE
CONNECTED?]



follow @ Shockey_Builds
for the latest Shockey news



network with
Shockey colleagues

Save the Date: Upcoming Conferences

Virginia School Board Association (VSBA)

Legislative Conference

January 23-24, 2013
Richmond Marriot
Richmond, VA

Association of General Contractors of VA (AGCVA)

Winter Conference

January 24-27, 2013
The Homestead
Hot Springs, VA

Virginia Municipal League (VML) Local Government Day

January 31, 2013
Richmond Marriot
Richmond, VA

Virginia Hospital and Healthcare Association (VHHA) Legislative Issues Conference

February 6-7, 2013
The Jefferson Hotel
Richmond, VA

Virginia Educational Facility Planners (VEFP)

Annual Conference
February 25 – 26, 2013
Richmond, VA

MADE IN VIRGINIA

Virginia is consistently named as one of the best states for business in rankings by CNBC, Forbes, and others. The manufacturing sector is poised for a rebound; according to an October 2012 report from PricewaterhouseCoopers, "Signs indicate a potential resurgence in US manufacturing activity, with the 're-shoring' of overseas operations back to the US and new investments by US and international manufacturers."

"From 2002-2010, manufacturing firms invested \$13.8 billion and created more than 69,000 jobs in the Commonwealth."

- Virginia Economic Development Partnership

Over the years, Shockey has built more than five million square feet of manufacturing facilities for companies in the Commonwealth, including Print Innovators, pictured here, Rubbermaid, GM, Kraft Foods, and Verizon. For new project inquiries, contact Jeff Boehm at jboehm@howardshockey.com.

howardshockey.com



www.fsc.org
MIX
Paper from
responsible sources